

# TORO

Design: Luigi Caccia Dominioni, 1973



Why Toro - bull in Italian? Because you can literally “take it by the horns” thanks to the metal frame emerging through the padding. The seat arms terminate in handles that allow you to move and rotate the furniture with consummate ease. The Milanese country club guests used to configure and reconfigure the seating as required, moving them closer together to converse or further apart for peace and quiet. These bulls are docile and easy to handle. More like Sitting Bull, the legendary Sioux leader who features in so many films and Italian cartoon strips from the 60s and 70s when Toro was first designed. Or perhaps Caccia Dominioni was thinking of Taurus, the sign of the zodiac? The easy-going, gentle and yet decisive nature of these creations makes this interpretation just as likely. With their rounded, inviting and well-upholstered shapes, the sofa and armchair can be complemented to perfection by a comfortable and simple footrest. This is all about relaxation and dialogue, a 1960s classic that - like every prize bull - doesn't age or ever go out of fashion.

**AZUCENA**

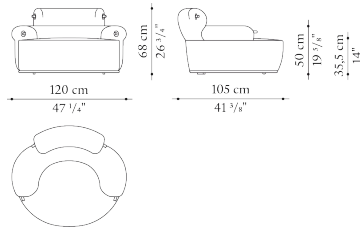
# TORO

Design: Luigi Caccia Dominioni, 1973

## Technical data

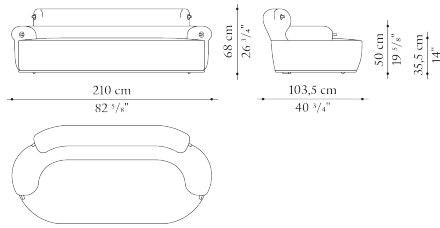
### Armchair

D\_TO1



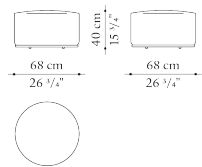
### Three-seater sofa

D\_TO2



### Round ottoman

D\_TO3



*Internal frame* tubular steel and steel profiles

*Upholstery* shaped polyurethane of different density, polyester fibre cover

*Base-frame and studs* painted metal

*Wheels* painted aluminium and plastic material

*Cover* fabric or leather

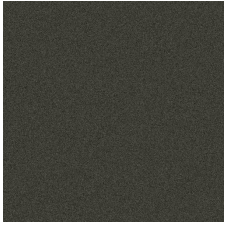
# AZUCENA

# TORO

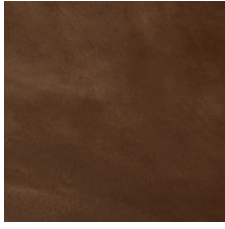
Design: Luigi Caccia Dominioni, 1973

## Finishes

### Metals

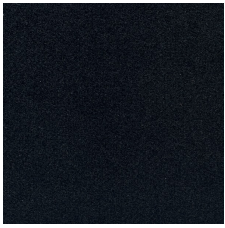


0799M  
Metallic grey finish

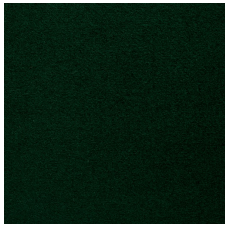


0905B  
Bronzed finish

### Fabrics



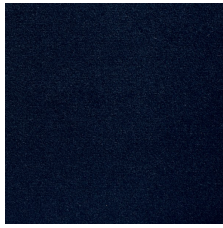
2970150  
Fabric Wood black



2970400  
Fabric Wood green



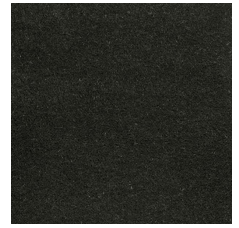
2970763  
Fabric Wood bordeaux



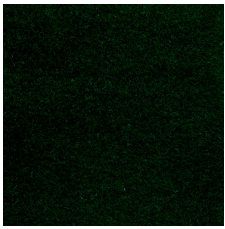
2970800  
Fabric Wood blue



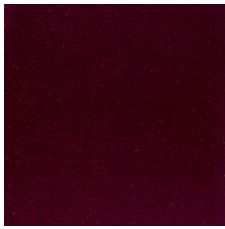
2971150  
Fabric Mohair black



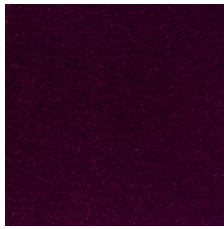
2971155  
Fabric Mohair smoke grey



2971400  
Fabric Mohair dark green



2971700  
Fabric Mohair bordeaux



2971763  
Fabric Mohair aubergine



2971800  
Fabric Mohair blue

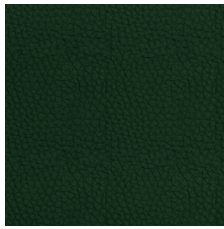
### Leathers



1119150  
Leather Koto black KT150



1119355  
Leather Koto dark brown  
KT355



1119400  
Leather Koto green KT400



1119750  
Leather Koto bordeaux  
KT750



1227106  
Leather Kasia caramel  
KS106



1227310  
Leather Kasia natural  
KS310