

# TORO

Design: Luigi Caccia Dominioni, 1973



Why Toro - bull in Italian? Because you can literally “take it by the horns” thanks to the metal frame emerging through the padding. The seat arms terminate in handles that allow you to move and rotate the furniture with consummate ease. The Milanese country club guests used to configure and reconfigure the seating as required, moving them closer together to converse or further apart for peace and quiet. These bulls are docile and easy to handle. More like Sitting Bull, the legendary Sioux leader who features in so many films and Italian cartoon strips from the 60s and 70s when Toro was first designed. Or perhaps Caccia Dominioni was thinking of Taurus, the sign of the zodiac? The easy-going, gentle and yet decisive nature of these creations makes this interpretation just as likely. With their rounded, inviting and well-upholstered shapes, the sofa and armchair can be complemented to perfection by a comfortable and simple footrest. This is all about relaxation and dialogue, a 1960s classic that - like every prize bull - doesn't age or ever go out of fashion.

**AZUCENA**

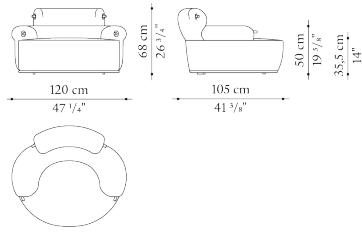
# TORO

Design: Luigi Caccia Dominioni, 1973

## Technical data

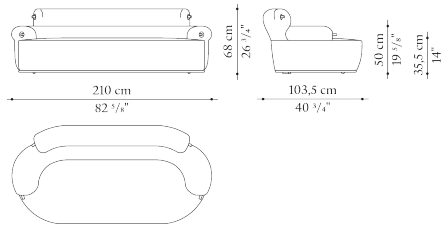
### Armchair

D\_TO1



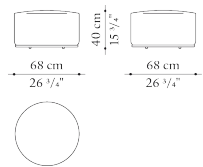
### Three-seater sofa

D\_TO2



### Round ottoman

D\_TO3



*Internal frame* tubular steel and steel profiles

*Upholstery* shaped polyurethane of different density, polyester fibre cover

*Base-frame and studs* painted metal

*Wheels* painted aluminium and plastic material

*Cover* fabric or leather

# AZUCENA

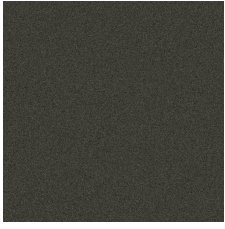
# TORO

Design: Luigi Caccia Dominioni, 1973

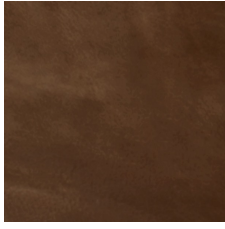
## Finishes

---

### Metals



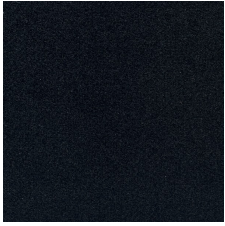
*0799M*  
Metallic grey finish



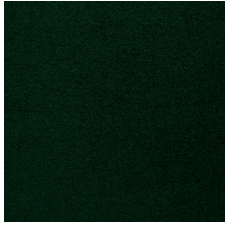
*0905B*  
Bronzed finish

---

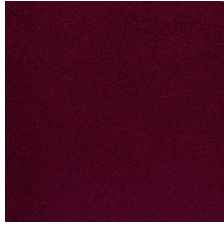
### Fabrics



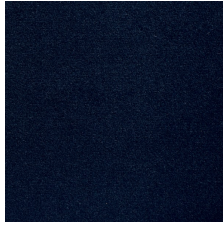
*2970150*  
Fabric Wood black



*2970400*  
Fabric Wood green



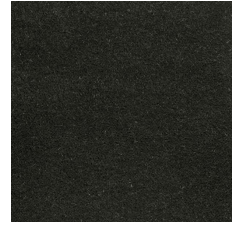
*2970763*  
Fabric Wood bordeaux



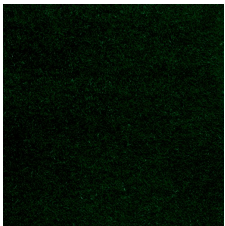
*2970800*  
Fabric Wood blue



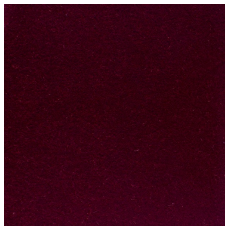
*2971150*  
Fabric Mohair black



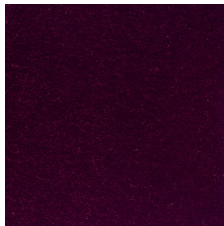
*2971155*  
Fabric Mohair smoke grey



*2971400*  
Fabric Mohair dark green



*2971700*  
Fabric Mohair bordeaux



*2971763*  
Fabric Mohair aubergine



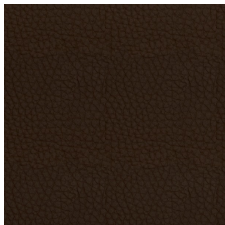
*2971800*  
Fabric Mohair blue

---

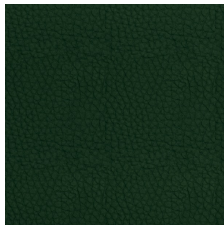
### Leathers



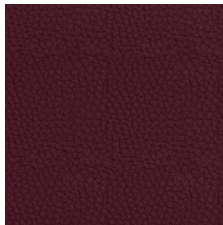
*1119150*  
Leather Koto black KT150



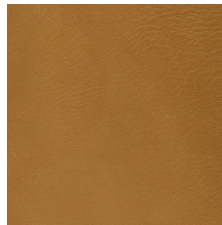
*1119355*  
Leather Koto dark brown  
KT355



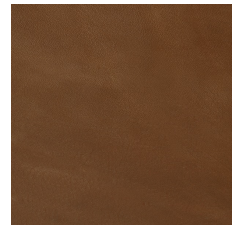
*1119400*  
Leather Koto green KT400



*1119750*  
Leather Koto bordeaux  
KT750



*1227106*  
Leather Kasia caramel  
KS106



*1227310*  
Leather Kasia natural  
KS310