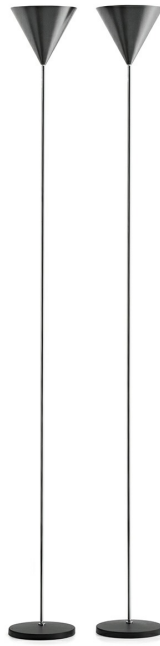


IMBUTO

Design: Luigi Caccia Dominioni, 1953



The fact that the lamp was originally going to be called “flute” perfectly illustrates how Luigi Caccia Dominioni found inspiration in the everyday and the exotic. The humble funnel meets a sophisticated glass flute, a kitchen implement used for water sits beside a wine or champagne glass, the one functional the other distinctive, one made of plastic or metal and the other of crystal: in Caccia Dominioni’s world the everyday and the exceptional are harmoniously interwoven. As functional as it is minimalist, the Imbuto lamp is solid and sufficiently pure in form to blend into or stand out in a room, be it traditionally furnished or contemporary in style. Whether its function is to illuminate or create ambience and whatever the size of the room, Imbuto is a byword for discretion.

AZUCENA

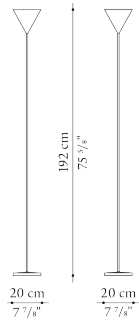
IMBUTO

Design: Luigi Caccia Dominioni, 1953

Technical data

Floor lamp

D_LP4



Stem brass or chromed brass

Cone-shaped reflector painted aluminium

Base-frame painted cast iron

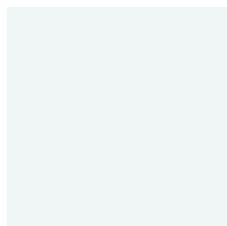
Ferrule felt

IMBUTO

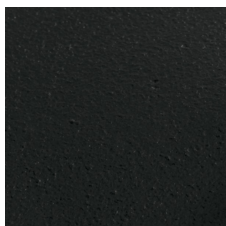
Design: Luigi Caccia Dominioni, 1953

Finishes

Metals



0023B
White painted



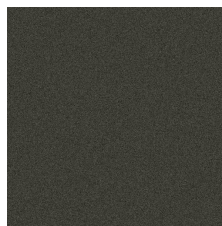
0055N
Black painted



0580T
Brass finish



0600C
Chromed finish



0799M
Metallic grey finish