

MONACHELLA

Design: Luigi Caccia Dominioni, 1953



Whether lighting up the book you are reading, or focusing in on a special object or part of a room, this lamp is modesty personified. In keeping with the Benedictine order's motto "pray and work", the Monachella operates dutifully and can be raised higher or lowered down the stem for optimal illumination. But over and above fulfilling its purpose as a tall reading lamp it is an object of contemplation and meditation. Monachella was designed in 1953 at the same time Caccia Dominioni was working on the Convent and Institute of the Beata Vergine Addolorata in Milan as a residence for a women's religious institute. Inspiration for the lamp may well have come from the architect's meetings with those commissioning this building that deftly combines solidity with spirituality.

AZUCENA

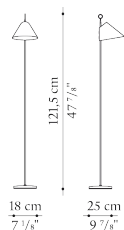
MONACHELLA

Design: Luigi Caccia Dominioni, 1953

Technical data

Floor lamp

D_LP3



Stem brass or chromed brass

Sliding reflector painted aluminium

Base-frame painted cast iron

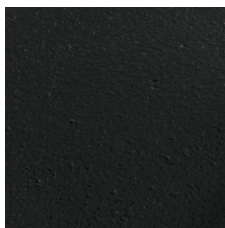
Ferrule felt

MONACHELLA

Design: Luigi Caccia Dominioni, 1953

Finishes

Metals



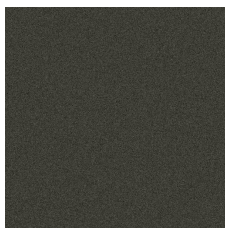
0055N
Black painted



0580T
Brass finish



0600C
Chromed finish



0799M
Metallic grey finish