

LAMPADA POLTRONA

Design: Luigi Caccia Dominioni, 1979



It's an adjustable spotlight attached to a length of leather and weighted at either end to ensure it stays in place. The idea is taken from the finest tailors who place lead tape into their jacket hems to guarantee the perfect hang. The press-button switch is both functional and decorative and archetypal in its own right. In common with many of his designs, Caccia Dominioni placed a premium on mobility - the lamp can easily be moved from one room to the next, more of an accessory than a piece of furniture. The idea came to Caccia Dominioni on seeing and deciding to improve on an "ugly but functional" lamp belonging to his sister-in-law. What we have is a fusion of objet trouvé and home-made, so typical of twentieth century contemporary art. With a masterly touch these separate objects have been merged to form a delightful piece of Italian craftsmanship. As Luigi Caccia Dominioni himself declared - the lamp is "elegant of course, efficient obviously but most of all eccentric".

AZUCENA

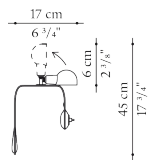
LAMPADA POLTRONA

Design: Luigi Caccia Dominioni, 1979

Technical data

Lamp for armchair and bed headboard

D_LPI



Adjustable reflector

brass or chromed brass

Band

leather

LAMPADA POLTRONA

Design: Luigi Caccia Dominioni, 1979

Finishes

Metals

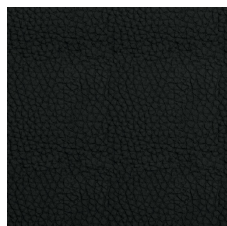


0580T
Brass finish

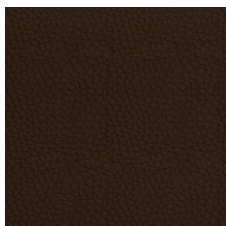


0600C
Chromed finish

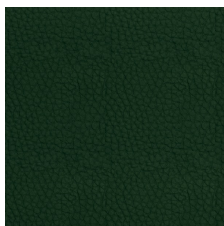
Leathers



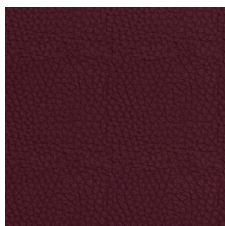
1119150
Leather Koto black KT150



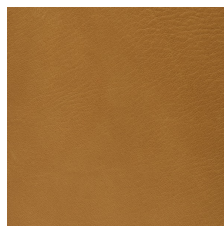
1119355
Leather Koto dark brown
KT355



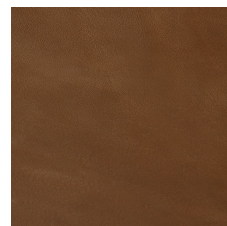
1119400
Leather Koto green KT400



1119750
Leather Koto bordeaux
KT750



1227106
Leather Kasia caramel
KS106



1227310
Leather Kasia natural
KS310