

POLE POSITION

Design: Luigi Caccia Dominioni, 2009



This padded bergère is a rarity among Luigi Caccia Dominioni's creations and the automobile seeps through into every detail of the model: from the curved backrest, through the stitching and Capitonné padding down to the wheels. The latter appear to be an indulgent reference to Caccia Dominioni's other ABCD armchair which also boasts two small wheels on the front chair legs.

AZUCENA

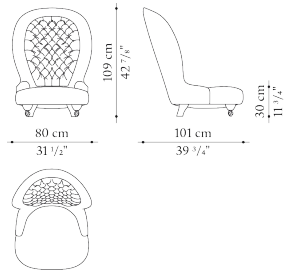
POLE POSITION

Design: Luigi Caccia Dominioni, 2009

Technical data

Armchair

D_PE1



<i>Internal frame</i>	solid wood
<i>Upholstery</i>	shaped polyurethane of different density, polyester fibre cover
<i>Front wheels</i>	painted aluminium and plastic material

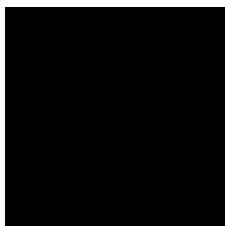
<i>Panel</i>	MDF wood fibre
<i>Feet</i>	lacquered solid wood
<i>Cover</i>	fabric or leather

POLE POSITION

Design: Luigi Caccia Dominioni, 2009

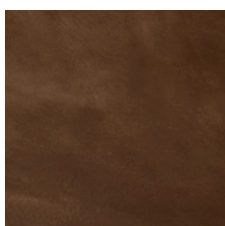
Finishes

Wood



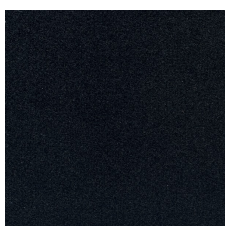
0443N
Matt black lacquered wood

Metals

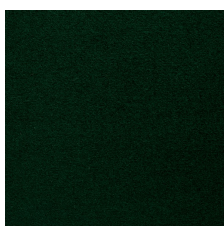


0905B
Bronzed finish

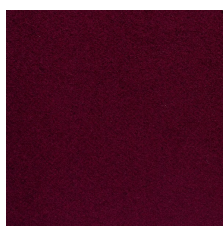
Fabrics



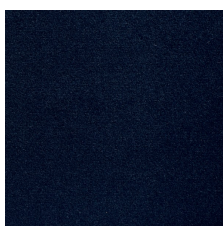
2970150
Fabric Wood black



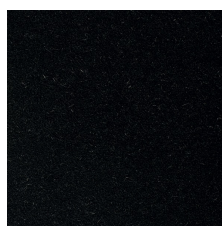
2970400
Fabric Wood green



2970763
Fabric Wood bordeaux



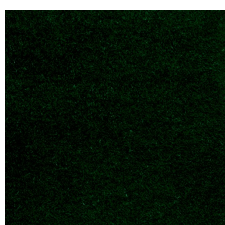
2970800
Fabric Wood blue



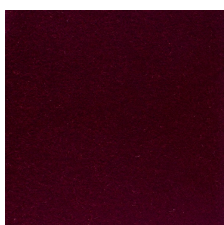
2971150
Fabric Mohair black



2971155
Fabric Mohair smoke grey



2971400
Fabric Mohair dark green



2971700
Fabric Mohair bordeaux

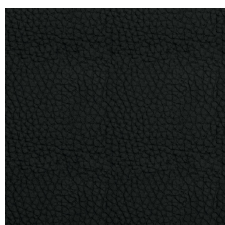


2971763
Fabric Mohair aubergine

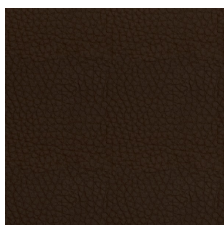


2971800
Fabric Mohair blue

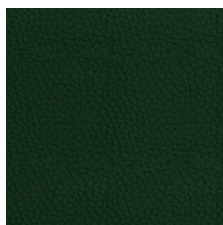
Leathers



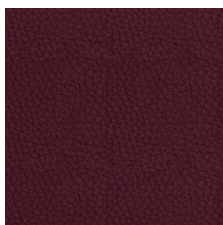
1119150
Leather Koto black KT150



1119355
Leather Koto dark brown
KT355



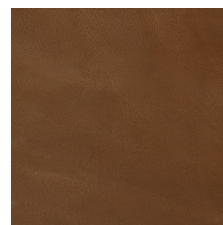
1119400
Leather Koto green KT400



1119750
Leather Koto bordeaux
KT750



1227106
Leather Kasia caramel
KS106



1227310
Leather Kasia natural
KS310

AZUCENA