

# CILINDRO

Design: Luigi Caccia Dominioni, 1963



This perfectly-proportioned masterpiece of elegance is the quintessence of form and style. In the shape of a two-tier cylinder, the lower part is made of brass topped with a velvet, woollen cloth or leather seat top. Cilindro and its many reworking can be spotted on the set of legendary films, in chic apartments and the smartest nightclubs, bars and restaurants the world over. Cilindro is much more than a design object - its minimalist lines make it a punctuation mark in any setting, large or small.

**AZUCENA**

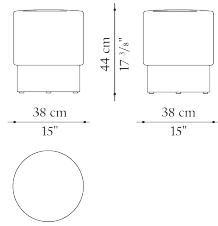
# CILINDRO

Design: Luigi Caccia Dominioni, 1963

## Technical data

Round ottoman

*D\_CD1*



*Upholstery* shaped polyurethane of different density

*Internal frame* multi-layered wood

*Base-frame* metal

*Ferrules* plastic material

*Cover* fabric or leather

# CILINDRO

Design: Luigi Caccia Dominioni, 1963

## Finishes

### Metals

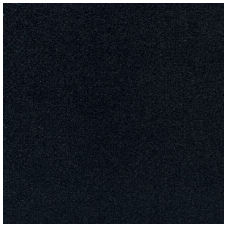


0580T  
Brass finish

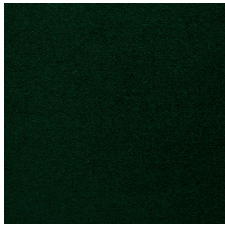


0600C  
Chromed finish

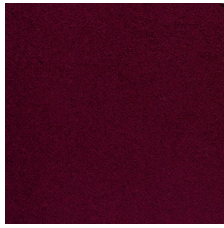
### Fabrics



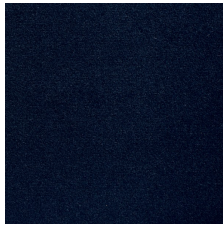
2970150  
Fabric Wood black



2970400  
Fabric Wood green



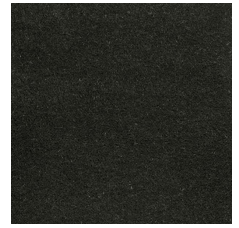
2970763  
Fabric Wood bordeaux



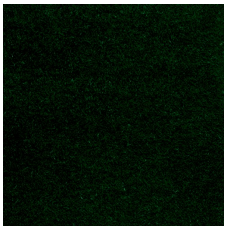
2970800  
Fabric Wood blue



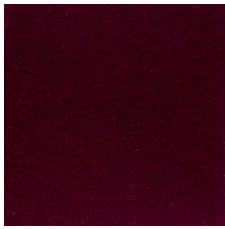
2971150  
Fabric Mohair black



2971155  
Fabric Mohair smoke grey



2971400  
Fabric Mohair dark green



2971700  
Fabric Mohair bordeaux



2971763  
Fabric Mohair aubergine



2971800  
Fabric Mohair blue

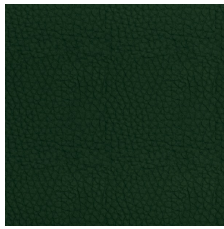
### Leathers



1119150  
Leather Koto black KT150



1119355  
Leather Koto dark brown  
KT355



1119400  
Leather Koto green KT400



1119750  
Leather Koto bordeaux  
KT750



1227106  
Leather Kasia caramel  
KS106



1227310  
Leather Kasia natural  
KS310