

MARIOLINA

by e-ggs



Mariolina è nata esplorando il mondo del polipropilene e i suoi nuovi sviluppi, abbinandosi delicatamente ad una estetica essenziale. La scocca è così semplice che puoi disegnarla senza staccare la penna dal foglio, bilanciando uno stile curato e attento al presente con la volontà di uscire dalle mode. Mariolina è la risposta alla necessità di un prodotto eclettico, realizzato con un metodo produttivo contemporaneo e adatto alla vita di tutti i giorni.

Mariolina came from an exploration into the world of polypropylene and its new developments, combining it with a delicate, honest aesthetic. The body is so simple that it can be drawn without the pen leaving the paper, balancing a careful style, attentive to the present, with the desire to break free of fashion.

Mariolina is the answer to the need for an eclectic product, made with a contemporary production method and suitable for everyday life.

DIMENSIONI | DIMENSIONS

BASIC | BASIC

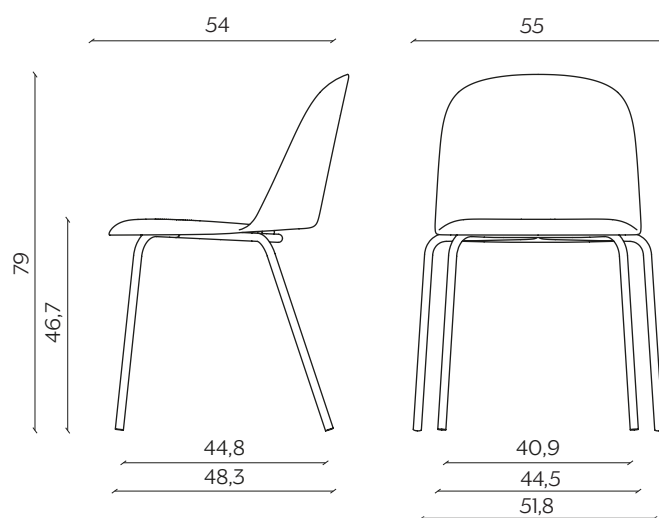
lunghezza | width: 55 cm

larghezza | depth: 54 cm

altezza | height: 79 cm

altezza del sedile | seat height: 46,7 cm

impilabilità | stackability: sì (X4) | yes (X4)



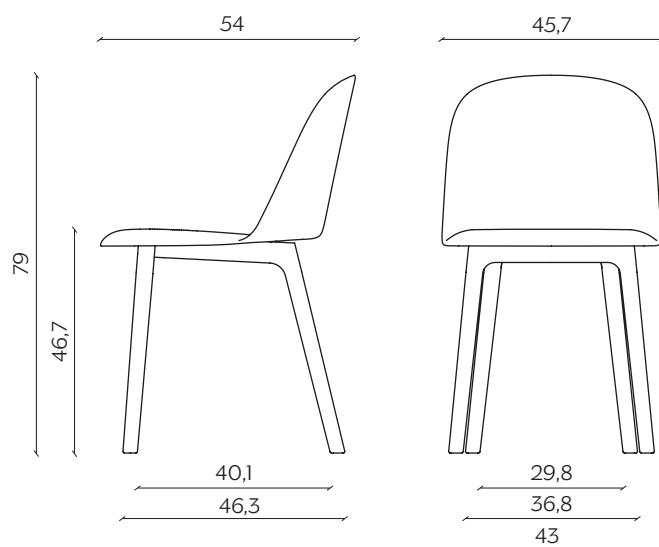
GAMBE IN LEGNO | WOODEN LEGS

lunghezza | width: 46 cm

larghezza | depth: 54 cm

altezza | height: 79 cm

altezza del sedile | seat height: 46,7 cm



AMBIENTE | ENVIRONMENT

interno, esterno (solo su base laccata e senza cuscino sedile)

indoor, outdoor (only on lacquered base and without seat cushion)

SLITTA | SLED BASE

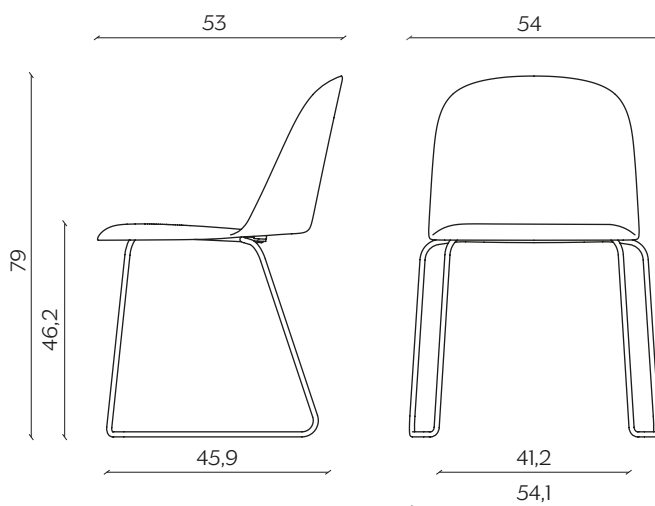
lunghezza | width: 54 cm

larghezza | depth: 53 cm

altezza | height: 79

altezza del sedile | seat height: 46,2 cm

impilabilità | stackability: sì (X4) | yes (X4)



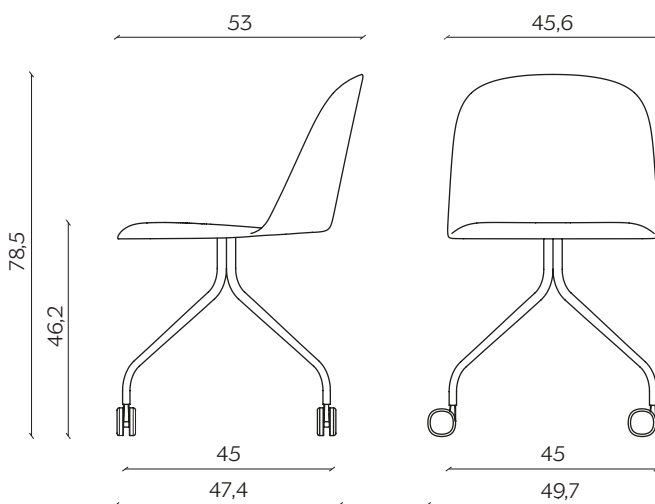
UFFICIO | OFFICE

lunghezza | width: 45,6 cm

larghezza | depth: 53 cm

altezza | height: 78,5

altezza del sedile | seat height: 46,2



DOWNLOAD | DOWNLOADS

la guida Cura e Manutenzione è disponibile su miniforms.com
Care and Maintenance guide is available at miniforms.com

file 2D, 3D e fotografie sono disponibili su miniforms.com
2D, 3D files and hi-res images are available at miniforms.com

FINITURE | FINISHES

GAMBE | LEGS

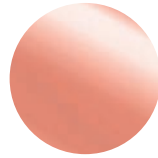
Legno | Wood



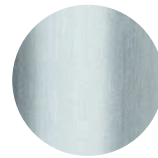
Frassino
Ash



Frassino Nero
Black Ash



Rame
Copper

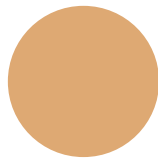


Zincato
Zinc-coated

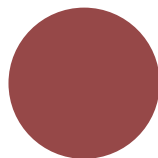
Metallo | Metal

GAMBE E SCOCCA | LEGS AND SHELL

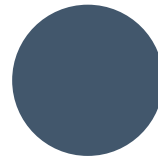
Laccato | Lacquer



Albicocca
Apricot



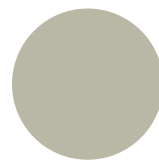
Rosso Marsala
Marsala Red



Blu Intenso
Intense Blue



Antracite
Anthracite



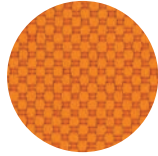
Grigio Seta
Silk Grey

FINITURE | FINISHES

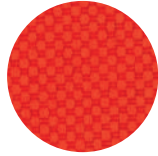
TESSUTI | FABRICS

A

Salò



Arancio
Orange



Rosso
Red



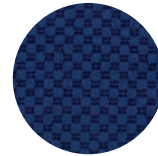
Marmellata
Jam



Grigio Chiaro
Light Grey

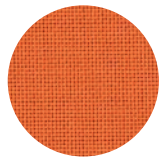


Marrone
Brown

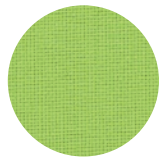


Blu Notte
Midnight Blue

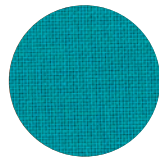
Loop



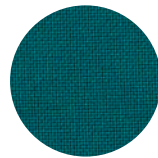
Arancione
Orange



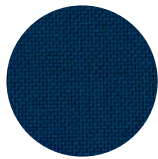
Lime



Turchese
Turquoise



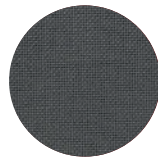
Ottanio
Teal Green



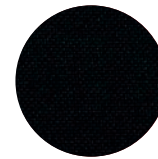
Blu Scuro
Dark Blue



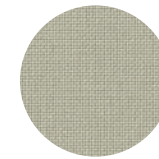
Testa di Moro
Dark Brown



Grigio Fumo
Smoke Grey



Nero
Black



Avorio
Ivory

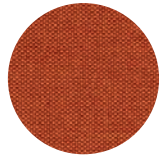
TESSUTI | FABRICS

A

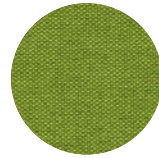
Tramè



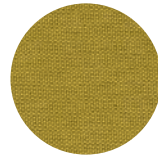
Beije



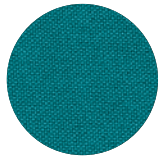
Arancio
Orange



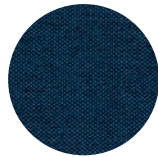
Mela
Apple



Senape
Mustard



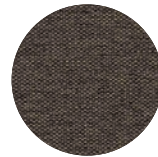
Pavone
Peacock



Blu Elettrico
Electric Blue



Nero
Black

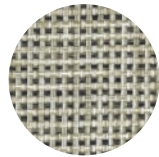


Crigio Scuro
Dark Grey

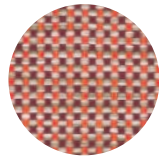


Tortora
Dove Grey

Madrid



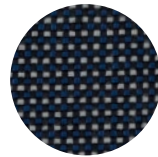
Burro
Butter



Melograno
Pomegranate



Menta
Mint



Notte
Night

FINITURE | FINISHES

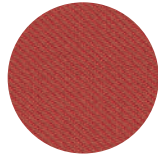
TESSUTI | FABRICS

B

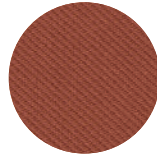
Kvadrat Relate



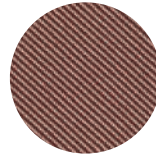
Rosa
Pink



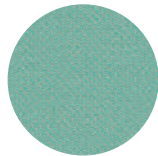
Rosso
Red



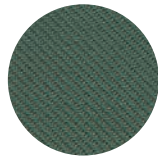
Terra
Ground



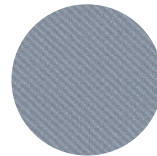
Snack



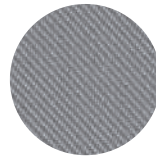
Menta
Mint



Verde Bosco
Forest Green



Nuvolo
Cloudy

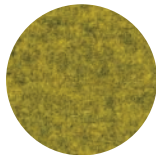


Grigio
Grey

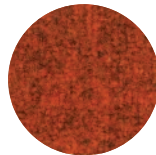
Lanee



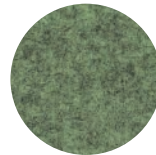
Grigio
Grey



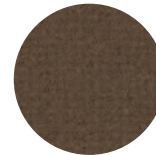
Giallo
Yellow



Rosso
Red



Menta
Mint

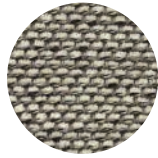


Marrone
Brown

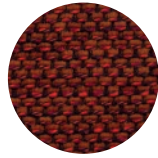
TESSUTI | FABRICS

B

Torrilana Cubbio



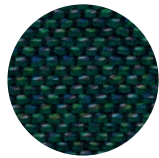
Sale e Pepe
Salt and Pepper



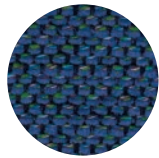
Ambra
Amber



Bordeaux



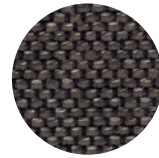
Verde Petrolio
Petrol Green



Blu Elettrico
Electric Blue

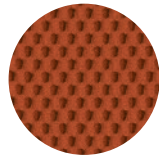


Castagna
Walnut

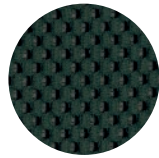


Tortora
Dove Grey

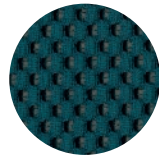
Mesh



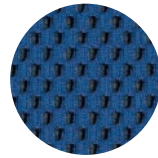
Rosso Corallo
Coral Red



Verde Salvia
Sage Green



Foglia di Tè
Teal

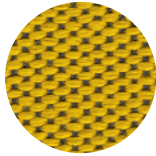


Blu Neon
Neon Blue

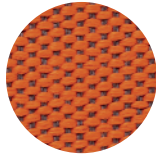
TESSUTI | FABRICS

B

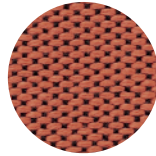
Vescom Wilson



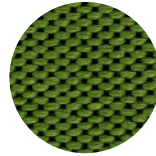
Ciallo Elettrico
Electric Yellow



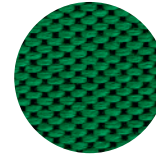
Energico
Energetic



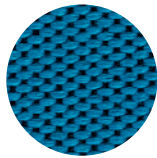
Rosé



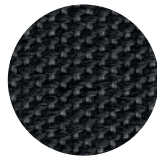
Laguna
Lagoon



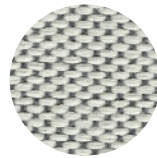
Prato
Field



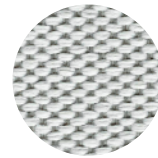
Zaffiro
Sapphire



Grafite
Graphite

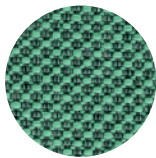


Sale e Pepe
Salt and Pepper

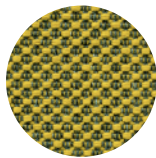


Neve
Snow

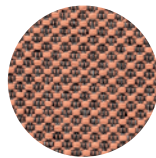
Vescom Norfolk



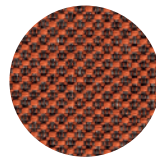
Latte e Menta
Milk and Mint



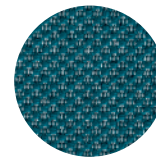
Ape
Bee



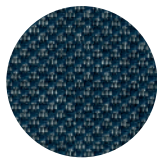
Rosa
Pink



Mattone
Brick



Petrolio
Petrol-Green



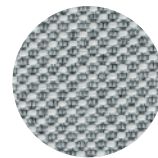
Notte
Night



Antracite
Anthracite



Sale e Pepe
Salt and Pepper



Ghiaccio
Ice

FINITURE | FINISHES

TESSUTI | FABRICS

C

Shelter Velvet



Crema
Cream



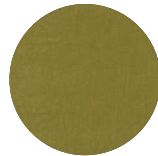
Rosa Intenso
Intense Rose



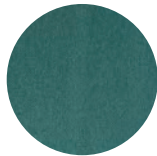
Terra di Siena
Burnt Sienna



Cammello
Camel



Verde
Green



Turchese
Turquoise

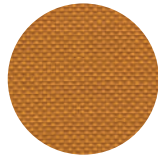


Blu Notte
Midnight Blue

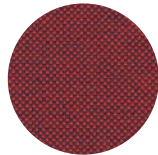


Testa di Moro
Dark Brown

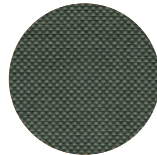
Kvadrat Field 2



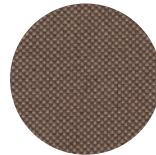
Zafferano
Saffron-Yellow



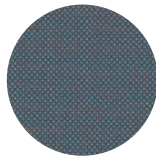
Ciliegia
Cherry



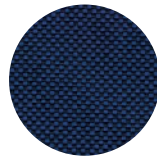
Menta
Mint



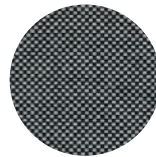
Nocciola
Hazel



Zucchero
Sugar



Blu
Blue



Sale e Pepe
Salt and Pepper

Torrilana Brionne

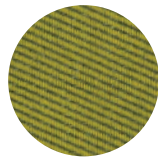


Black and White

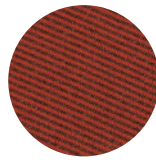
TESSUTI | FABRICS

C

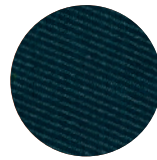
Vescom Harding



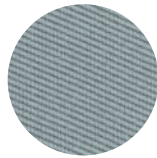
Ciallo
Yellow



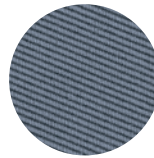
Rosso
Red



Petrolio
Blue-Green

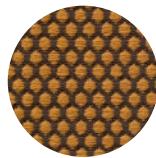


Grigio Chiaro
Light Grey

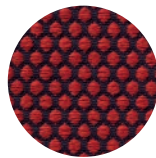


Nuvolo
Cloudy

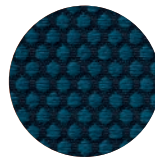
Vescom Rolla



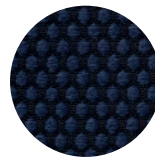
Mostarda
Mustard



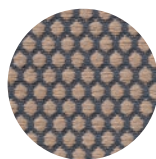
Ciliegia
Cherry



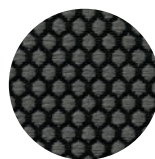
Blu Pavone
Peacock



Blu Notte
Midnight Blue



Latte
Steamed Milk



Antracite
Anthracite

Torrilana Rakam



Bacca
Berry

FINITURE | FINISHES

TESSUTI | FABRICS

D

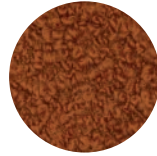
Cloud



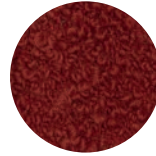
Panna
Cream



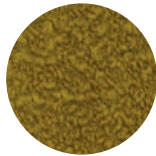
Noce
Walnut



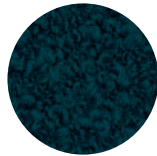
Nocciola
Hazelnut



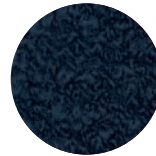
Bordeaux



Senape
Mustard

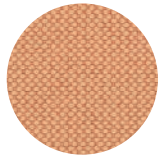


Petrolio
Blue-Green

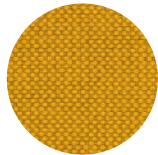


Blu Notte
Night Blue

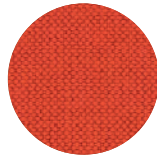
Maharam Merit



Salmone
Salmon



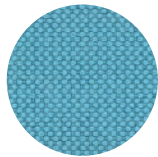
Ciallo
Yellow



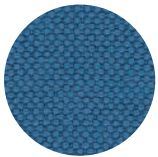
Rosso Corallo
Coral Red



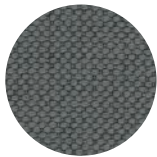
Marrone
Brown



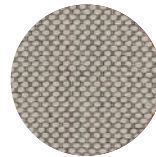
Celeste
Sky Blue



Blu Cobalto
Cobalt Blue



Grigio
Grey

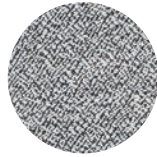


Sale e Pepe
Salt and Pepper

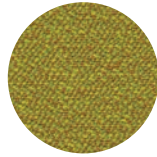
TESSUTI | FABRICS

D

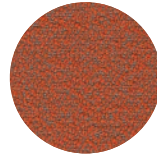
Rohi Sera



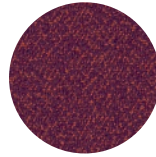
Pepper



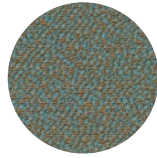
Tivoli



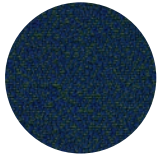
Glow



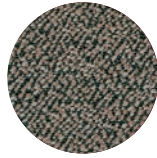
Berry



Mirage



Mare

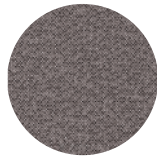


Walnut

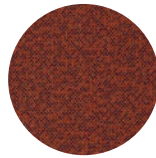


Rosewood

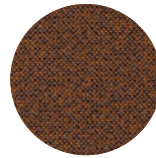
Rohi Mica



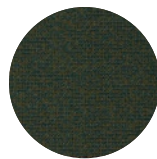
Pepper



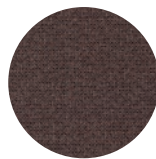
Indio



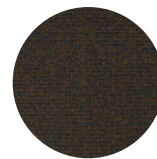
Amber



Jungle



Mud



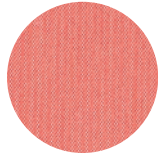
Secret

FINITURE | FINISHES

TESSUTI | FABRICS

E

Kvadrat Steelcut Trio 3



Arancia Rossa
Red Orange



Pavone
Peacock



Pesca
Peach



Sale e Pepe
Salt and Pepper



Elettricità
Electricity